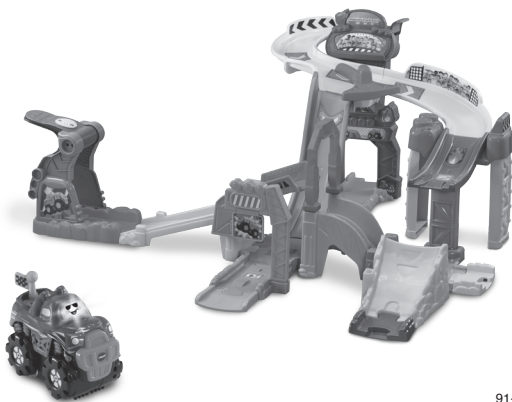


vtech®

Parent's Guide

Toot-Toot Drivers®

Monster Truck Rally

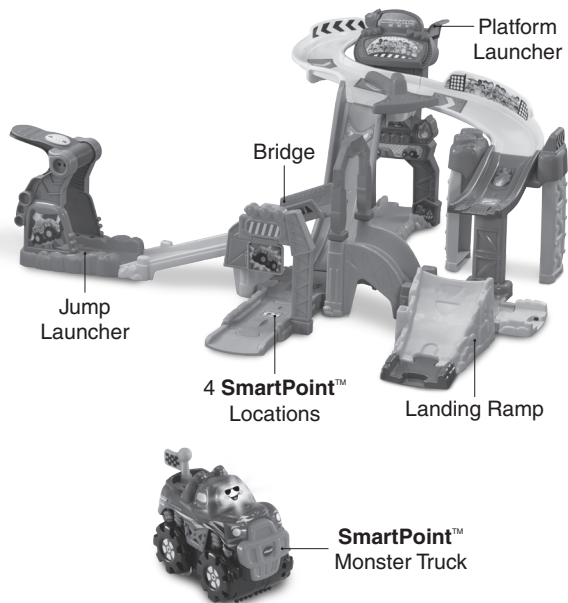


91-003998-001 ©

INTRODUCTION

Thank you for purchasing the **Toot-Toot Drivers® Monster Truck Rally**.

Little racers will love performing all the stunts on this wild ride! Launch the Monster Truck off one of two launchers and create multiple configurations for even more fun. Plus, hear fun music and sound effects when the vehicle responds to the four **SmartPoint™** locations. It's a great day to race!



INCLUDED IN THE PACKAGE



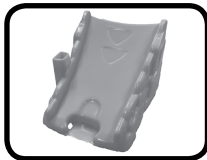
One **SmartPoint™**
Monster Truck



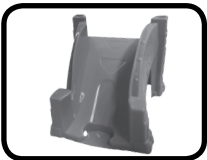
One jump launcher



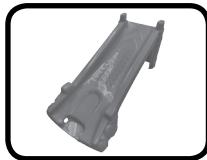
One jump launcher
base



One landing ramp



One slope track A



One slope track B



One stadium base



Two 1/3 length
male track pieces



One slope track C



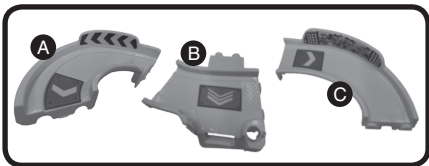
One fire arch



One platform
launcher



One stadium wall



Three S-tracks



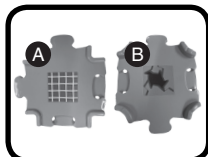
One S-track platform



One S-track exit



Two S-track supports



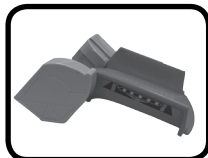
Two cross tracks



One switch track



Two platform
launcher supports



One bridge



One sign



One sign base



One end track

- Label sheet
- Parent's Guide

WARNING

All packing materials such as tape, plastic sheets, packaging locks, removable tags, cable ties, cords and packaging screws are not part of this toy, and should be discarded for your child's safety.

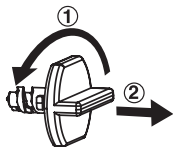
NOTE

Please save this Parent's Guide as it contains important information.

NOTE

This toy is not intended for teething.

Unlock the Packaging Locks



① Turn the packaging lock anticlockwise several times.

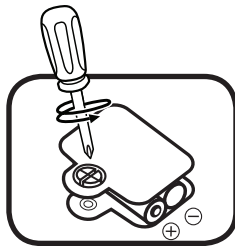
② Pull out the packaging lock and discard.

GETTING STARTED

Battery Removal and Installation

Monster Truck

1. Make sure the unit is turned **Off**.
2. Locate the battery cover on the bottom of the **Monster Truck**. Use a screwdriver to loosen the screw, then open the battery cover.
3. Remove old batteries by pulling up on one end of each battery.
4. Install 2 new AAA (AM-4/LR03) batteries following the diagram inside the battery box.
5. Replace the battery cover and tighten the screw to secure.



IMPORTANT: BATTERY INFORMATION

- Insert batteries with the correct polarity (+ and -).
- Do not mix old and new batteries.
- Do not mix alkaline, standard (carbon-zinc) or rechargeable batteries.
- Only batteries of the same or equivalent type as recommended are to be used.
- Do not short-circuit the supply terminals.
- Remove batteries during long periods of non-use.
- Remove exhausted batteries from the toy.
- Dispose of batteries safely. Do not dispose of batteries in fire.

RECHARGEABLE BATTERIES:

- Remove rechargeable batteries from the toy before charging.
- Rechargeable batteries are only to be charged under adult supervision.
- Do not charge non-rechargeable batteries.



WARNING:

Adult assembly required for battery installation.
Keep batteries out of reach of children.

Disposal of batteries and product



The crossed-out wheellie bin symbols on products and batteries, or on their respective packaging, indicates they must not be disposed of in domestic waste as they contain substances that can be damaging to the environment and human health.

The chemical symbols Hg, Cd or Pb, where marked, indicate that the battery contains more than the specified value of mercury (Hg), cadmium (Cd) or lead (Pb) set out in the Batteries and Accumulators Regulation.



The solid bar indicates that the product was placed on the market after 13th August, 2005.

Help protect the environment by disposing of your product or batteries responsibly.

VTech® cares for the planet.

Care for the environment and give your toy a second life by disposing of it at a small electricals collection point so all its materials can be recycled.

In the UK:

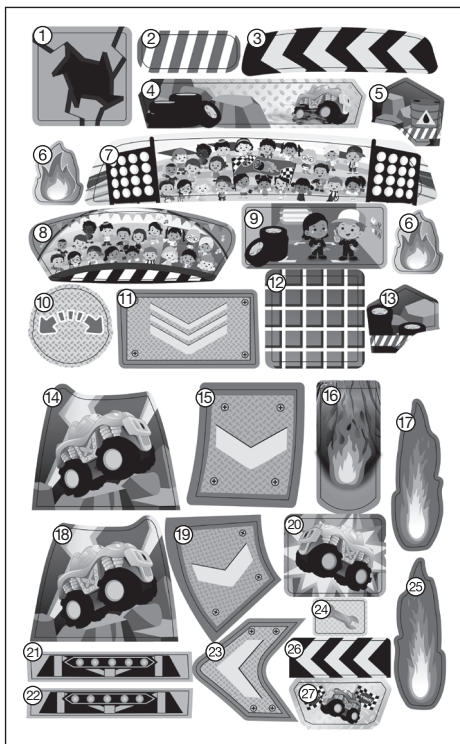
Visit www.recyclenow.com to see a list of collection points near you.

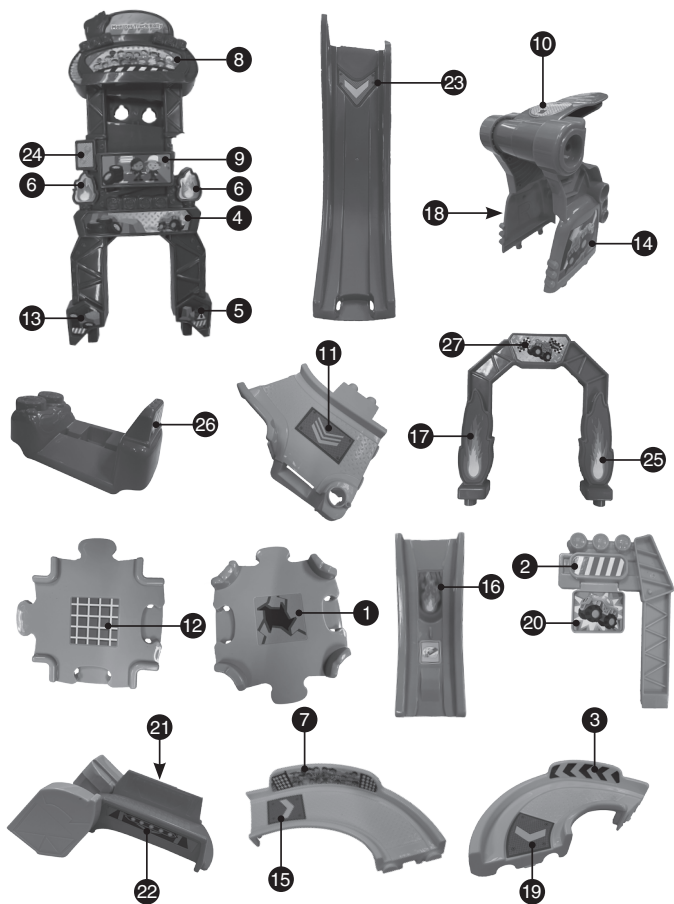
In Australia & New Zealand:

Check with you local council for kerbside collections.

LABEL APPLICATION

Please stick the labels to the play set as shown below:

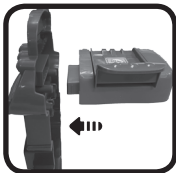




ASSEMBLY INSTRUCTIONS

With the **Toot-Toot Drivers® Monster Truck Rally**, safety comes first. To ensure your child's safety, adult assembly is required.

1. Connect the **Platform Launcher** and **S-Track B** with the **Stadium Wall**.



2. Connect the **Platform Launcher** with **S-Track A**, and connect **S-Track A**, **S-Track C** and **Slope Track C** with **S-Track B**.



3. Insert the **Jump Launcher** into the **Jump Launcher Base**, then connect with **Slope Track B** and **Cross Track B**. Make sure you hear a click to confirm the pieces are firmly connected.



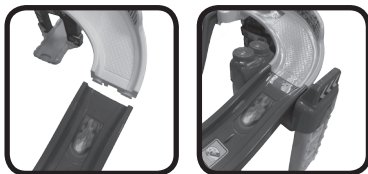
4. Insert the **Sign** into the **Sign Base** and connect with **Cross Track B**. Then connect with **Slope Track C** and insert the **Switch Track** into **S-Track B**.



5. Insert the two **Platform Launcher Supports** into the **S-Track Platform**, then insert **S-Track Support A** into **S-Track Support B**. Then connect **S-Track Support A** with **S-Track Exit**.



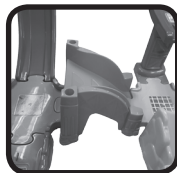
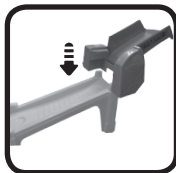
6. Connect **S-Track C** with **S-Track Exit** on the **S-Track Platform**.



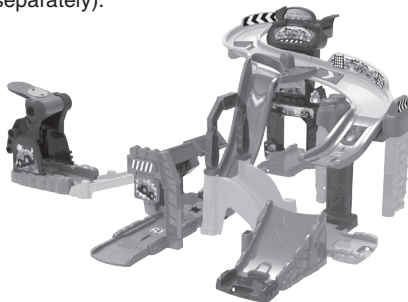
7. Connect the **Landing Ramp**, **Cross Track A** and one **1/3 Length Male Track** with **S-Track Support B**.



8. Insert the **Fire Arch** into **Slope Track A** and insert the **Bridge** into **Slope Track B**. Then connect **Cross Track A** and **B** with **Slope Track A**.



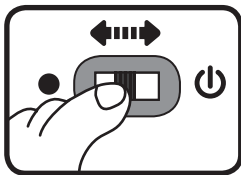
Once you've completed the above steps, you are ready to play! You can also connect the play set to other Toot-Toot Drivers® play sets (each sold separately).



PRODUCT FEATURES

1. On/Off Switch

To turn the unit **On**, slide the **On/Off Switch** to the **On** ☺ position. To turn the unit **Off**, slide the **On/Off Switch** to the **Off** ● position.



2. Automatic Shut-Off

To preserve battery life, the **Monster Truck** will automatically power down after approximately 60 seconds without input. The unit can be turned on again by pressing light up button.

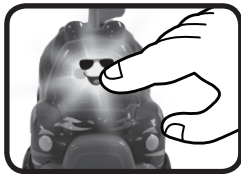
NOTE

If the unit powers down or if the light fades out during play, please install a new set of batteries.

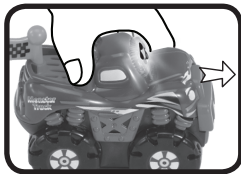
ACTIVITIES

Monster Truck

1. Press the windscreen button on the **Monster Truck** to hear fun songs, exciting phrases, sounds and music. The lights will flash with the sound.



2. Push the **Monster Truck** to hear fun sounds. If a melody is already playing, push the **Monster Truck** to add fun sounds on top of the melody. The light will flash with the sounds.



3. For added fun, the **Monster Truck** interacts with the **Toot-Toot Drivers® Monster Truck Rally**. Simply put the **Monster Truck** on one of the play set's four **SmartPoint™** locations to hear fun sounds and see the light flash. The **Monster Truck** also interacts with other **Toot-Toot Drivers®** play sets (each sold separately).



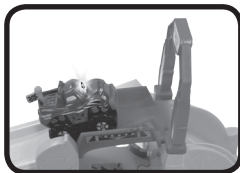
ACTIVITIES

Monster Truck Rally

1. Place the **Monster Truck** or any **SmartPoint™** vehicle (each sold separately) on any of the play set's four **SmartPoint™** locations to trigger fun sounds, short tunes or phrases.
2. Place the **Monster Truck** on the **Jump Launcher** and press the back of the lever to launch the vehicle onto the tracks.
3. Place the **Monster Truck** on the **Platform Launcher** and lift the platform to launch the vehicle onto the tracks.



4. Push the **Monster Truck** over the **Bridge** and it will lower as the vehicle passes.



5. Flip the **Switch Track** to send the vehicle in a different direction down the tracks.





MELODY LIST

1. Take Me Out to the Ball Game
2. Chopsticks
3. Flight of the Bumble Bee
4. For He's a Jolly Good Fellow
5. Bingo
6. Row, Row, Row Your Boat

SING-ALONG SONG LYRICS

Song 1

Climbing up and speeding down.
I like to rush 'round on my tracks,
Faster faster, here we go!
I'm the fastest truck you'll ever know!




Song 2

Start my engine, spin my wheels
Watch me climb and bounce around,
3-2-1, here I go!
Come on and watch me race!

Song 3

Toot-Toot Drivers,
Toot-Toot Drivers,
I'm a Toot-Toot Drivers Monster truck,
Let's start my exciting show. (Toot! Toot!)
Racing through and round the ramps,
Let's Go! Go! and see! (Toot! Toot!)







CARE & MAINTENANCE

1. Keep the unit clean by wiping it with a slightly damp cloth.
2. Keep the unit out of direct sunlight and away from any direct heat source.
3. Remove the batteries if the unit will not be in use for an extended period of time.
4. Do not drop the unit on hard surfaces and do not expose the unit to moisture or water.

TROUBLESHOOTING

If for some reason the unit stops working or malfunctions, please follow these steps:

- 
1. Please turn the unit Off.
 2. Interrupt the power supply by removing the batteries.
 3. Let the unit sit for a few minutes, then replace the batteries.
 4. Turn the unit On. The unit should now be ready to play again.
 5. If the product still does not work, replace with an entire set of new batteries.
- 

CONSUMER SERVICES

Creating and developing VTech products is accompanied by a responsibility that we at **VTech®** take very seriously. We make every effort to ensure the accuracy of the information, which forms the value of our products. However, errors sometimes can occur. It is important for you to know that we stand behind our products and encourage you to call our Consumer Services Department with any problems and/or suggestions that you might have. A service representative will be happy to help you.

UK Customers:

Phone: 0330 678 0149 (from UK) or +44 330 678 0149 (outside UK)
Website: www.vtech.co.uk/support

Australian Customers:

Phone: 1800 862 155
Website: support.vtech.com.au

NZ Customers:

Phone: 0800 400 785
Website: support.vtech.com.au

PRODUCT WARRANTY/ CONSUMER GUARANTEES

UK Customers:

Read our complete warranty policy online at vtech.co.uk/warranty.

Australian Customers:

VTECH ELECTRONICS (AUSTRALIA) PTY LIMITED –
CONSUMER GUARANTEES

Under the Australian Consumer Law, a number of consumer guarantees apply to goods and services supplied by VTech Electronics (Australia) Pty Limited. Please refer to vtech.com.au/consumerguarantees for further information.



**Visit our website for more
information about our products,
downloads, resources and more.**

www.vtech.co.uk
www.vtech.com.au



TM & © 2021 VTech Holdings Limited.
All rights reserved.
Printed in China.
91-003998-001 